



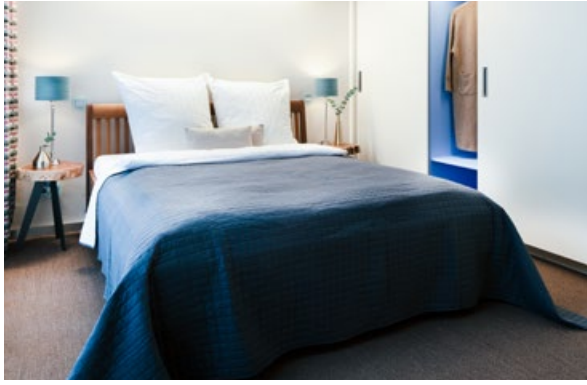
D41

DUSSMANN BOARDING HOUSE
BERLIN-MITTE



APARTMENT **5.02**

55 m² · 1½ rooms · loggia



APARTMENT 5.02

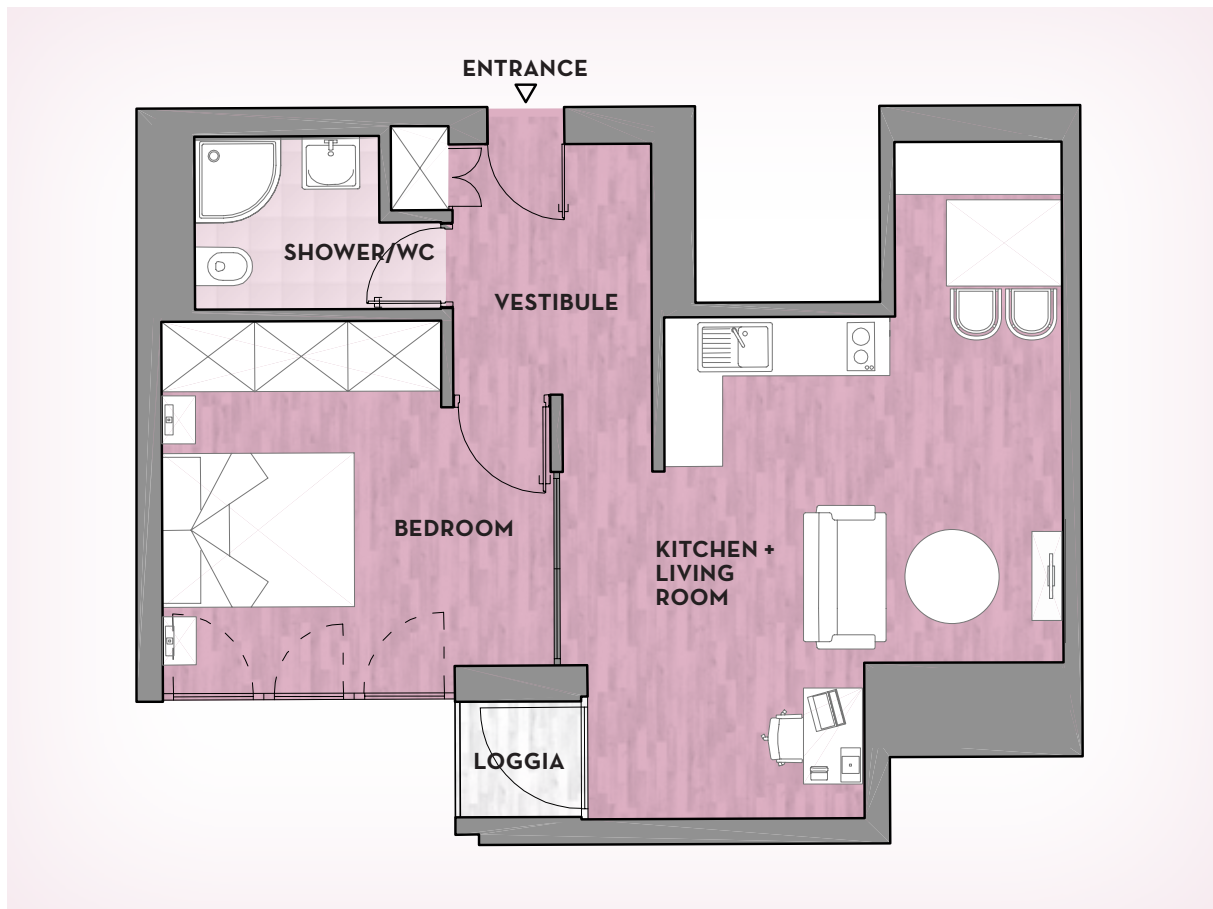
The bold color scheme lends this apartment a youthful vitality. It includes a loggia looking onto the quiet inner courtyard where you can curl up with a good book.



55
m²



APARTMENT 5.02



LIGHT AND LIVELY Transparency, strong colors and warm materials are stylishly balanced. This 1½ room apartment is a miracle of spatial planning. Accessories in bold tones and carefully matched furnishings set lively accents and lend a lightness to everyday life. The kitchen is fully equipped with every necessity. The shower has a rain showerhead. Bed linen and towels are provided.

LOCATION The apartment is located on the fifth floor with elevator. It faces northwest to the quiet courtyard.

RENT incl. heating, operating expenses, electricity, cable TV

CONTACT

D41 – Dussmann Boarding House
Dorotheenstraße 41, 10117 Berlin
030 2025-1360
boardinghouse@d41.berlin
www.d41.berlin

FURNISHINGS 5.02

GENERAL

- floor heating
- air cooling system
- modern doorbell system with video, weather and news functions
- hand towels
- bed linen
- elevator
- full-length French windows
- free WiFi
- non-smoker
- cleaning*
- washing machine & dryer in separate utility room

LIVING AREA

- desk
- TV
- blu-ray player

KITCHEN

- stove with two hotplates
- dishwasher
- microwave
- coffee machine

BEDROOM

- double bed 160 × 200 cm
- wardrobe with interior lighting

SERVICES

- concierge service
- laundry service*
- towel and bed linen service*

* charged separately



D41

DUSSMANN BOARDING HOUSE
BERLIN-MITTE

WWW.D41.BERLIN